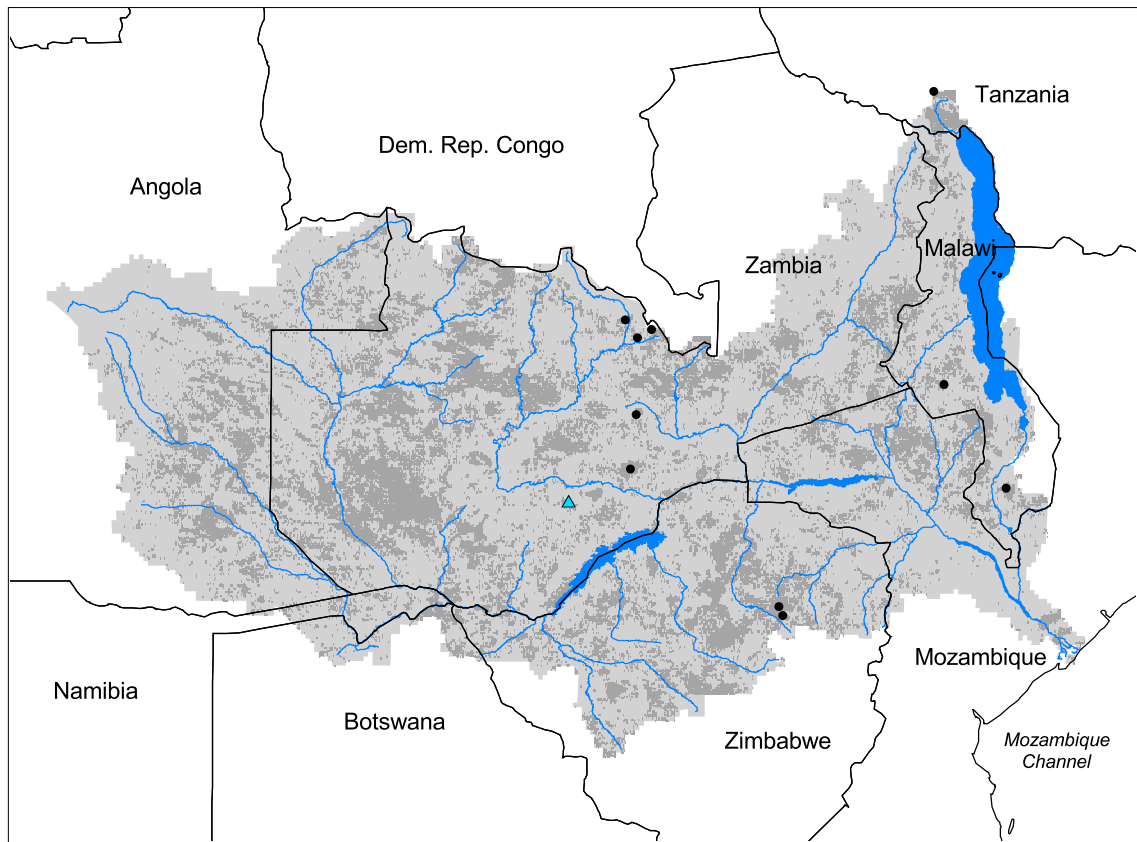


## Zambezi Watershed



- Watershed
- Cities (population > 100,000)
- Ramsar Sites
- Political Boundaries (Intl.)
- Political Boundaries (Natl.)
- Rivers
- Modified Landscape

100 0 100 200 300 400 500 Kilometers

Basin area: 1,332,574 km<sup>2</sup>  
 Population density: 18 people per km<sup>2</sup>  
 Urban growth rate: 5.0%  
 Large cities: 10  
 Total fish species: 122 (intr: 7)  
 Fish endemics: 25  
 Threatened fish species: 1  
 Endemic bird areas: 3  
 Ramsar sites: 1  
 Protected areas: 8%  
 Wetlands: 8%  
 Arid: 9%

Forest: 4%  
 Cropland: 20%  
 Cropland irrigated: 0%  
 Developed: 1%  
 Shrub: 0%  
 Grassland: 74%  
 Barren: 1%  
 Loss of original forest: 43%  
 Deforestation rate: 9%  
 Eroded area: 2%  
 Large dams: 6  
 Planned major dams: -

