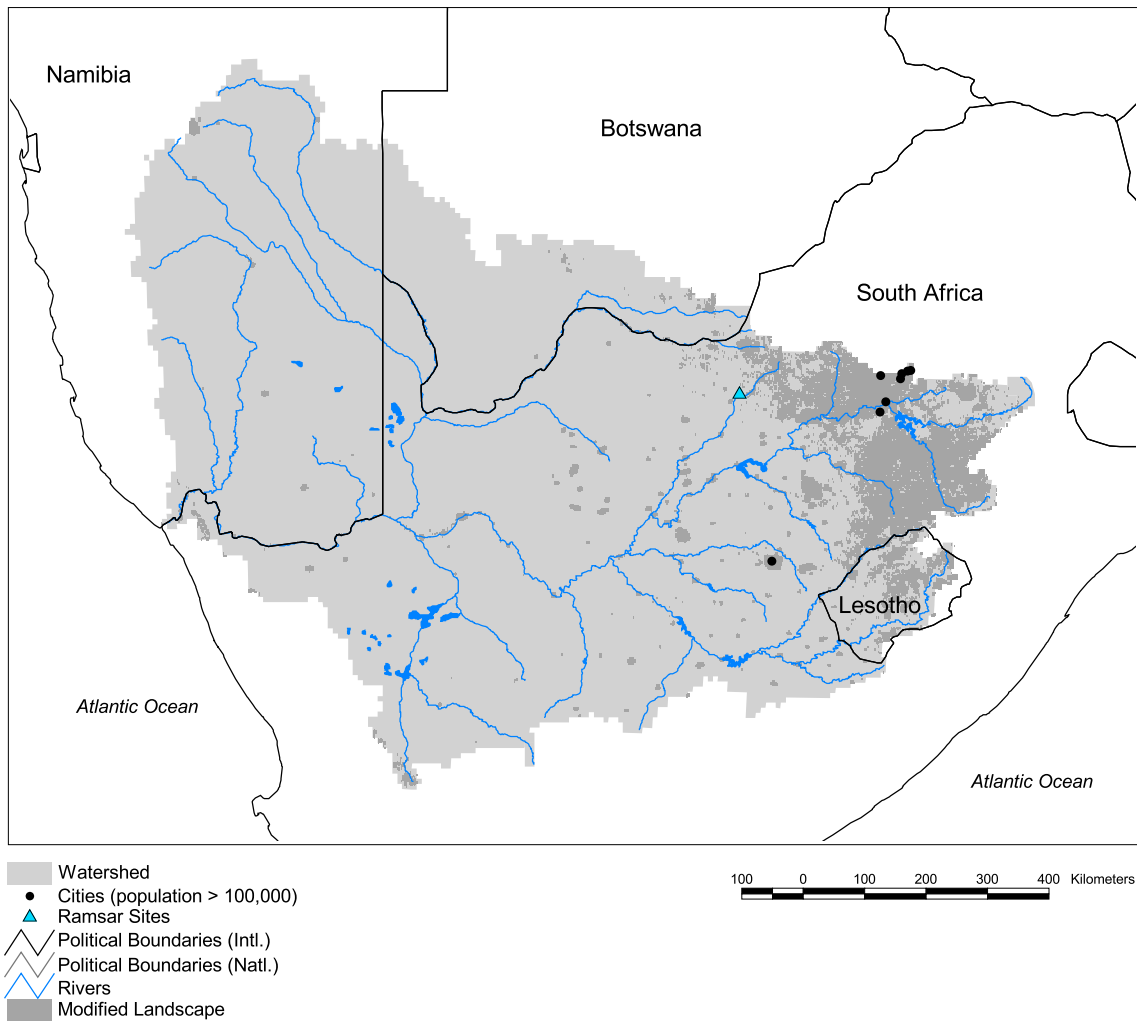


## Orange Watershed



Basin area:	941,421 km <sup>2</sup>	Forest:	0%
Population density:	12 people per km <sup>2</sup>	Cropland:	7%
Urban growth rate:	4.6%	Cropland irrigated:	0%
Large cities:	9	Developed:	2%
Total fish species:	24	Shrub:	43%
Fish endemics:	7	Grassland:	44%
Threatened fish species:	2	Barren:	6%
Endemic bird areas:	2	Loss of original forest:	100%
Ramsar sites:	1	Deforestation rate:	-
Protected areas:	5%	Eroded area:	21%
Wetlands:	1%	Large dams:	4
Arid:	77%	Planned major dams:	2

