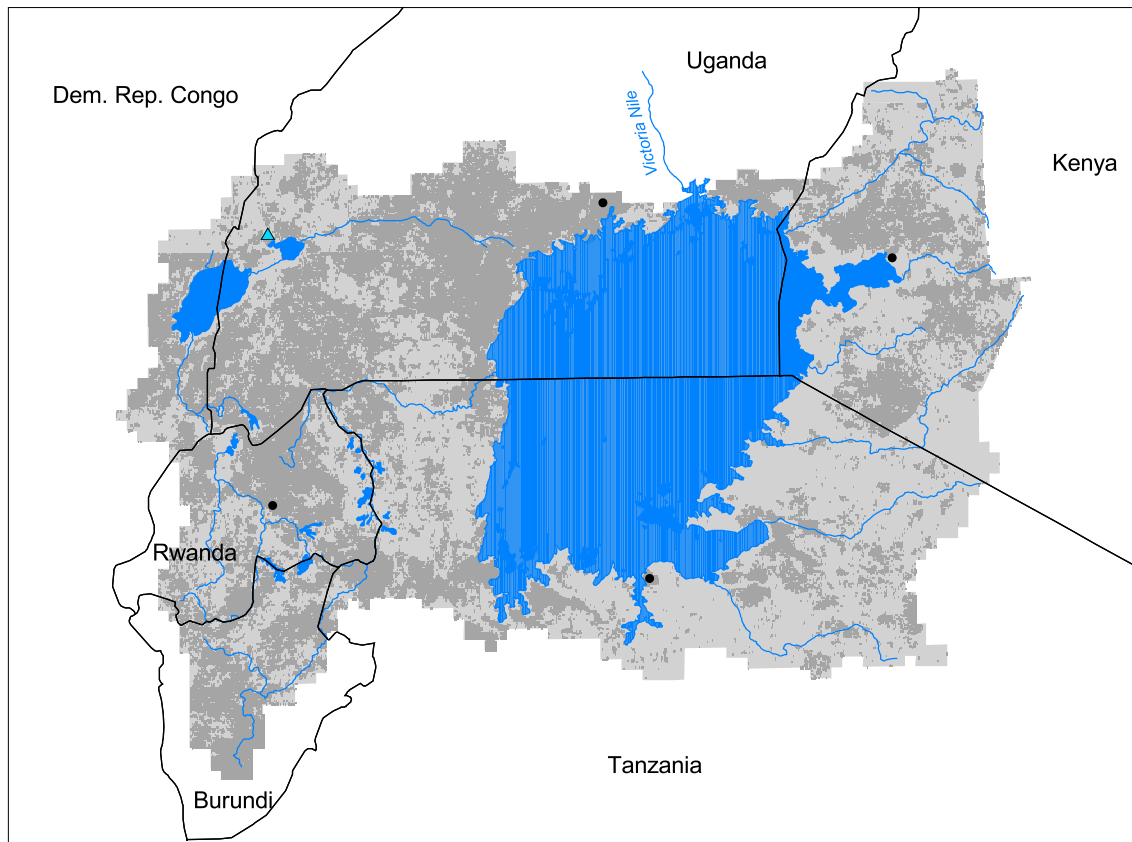


Nile Watershed: Lake Victoria Subbasin



- Watershed
- Cities (population > 100,000)
- Ramsar Sites
- Political Boundaries (Intl.)
- Political Boundaries (Natl.)
- Rivers
- Modified Landscape

40 0 40 80 120 160 Kilometers

Basin area: 283,168 km²
 Population density: 160 people per km²
 Urban growth rate: 4.7%
 Large cities: 4
 Total fish species: 343 (intr: 5)
 Fish endemics: 309
 Threatened fish species: 26
 Endemic bird areas: 4
 Ramsar sites: 1
 Protected areas: 17%
 Wetlands: 31%
 Arid: 26%

Forest: 9%
 Cropland: 40%
 Cropland irrigated: 0%
 Developed: 1%
 Shrub: 10%
 Grassland: 37%
 Barren: 2%
 Loss of original forest: 89%
 Deforestation rate: 7%
 Eroded area: 8%
 Large dams: 1
 Planned major dams: 0

Land Cover Within 5 km of Major Rivers

