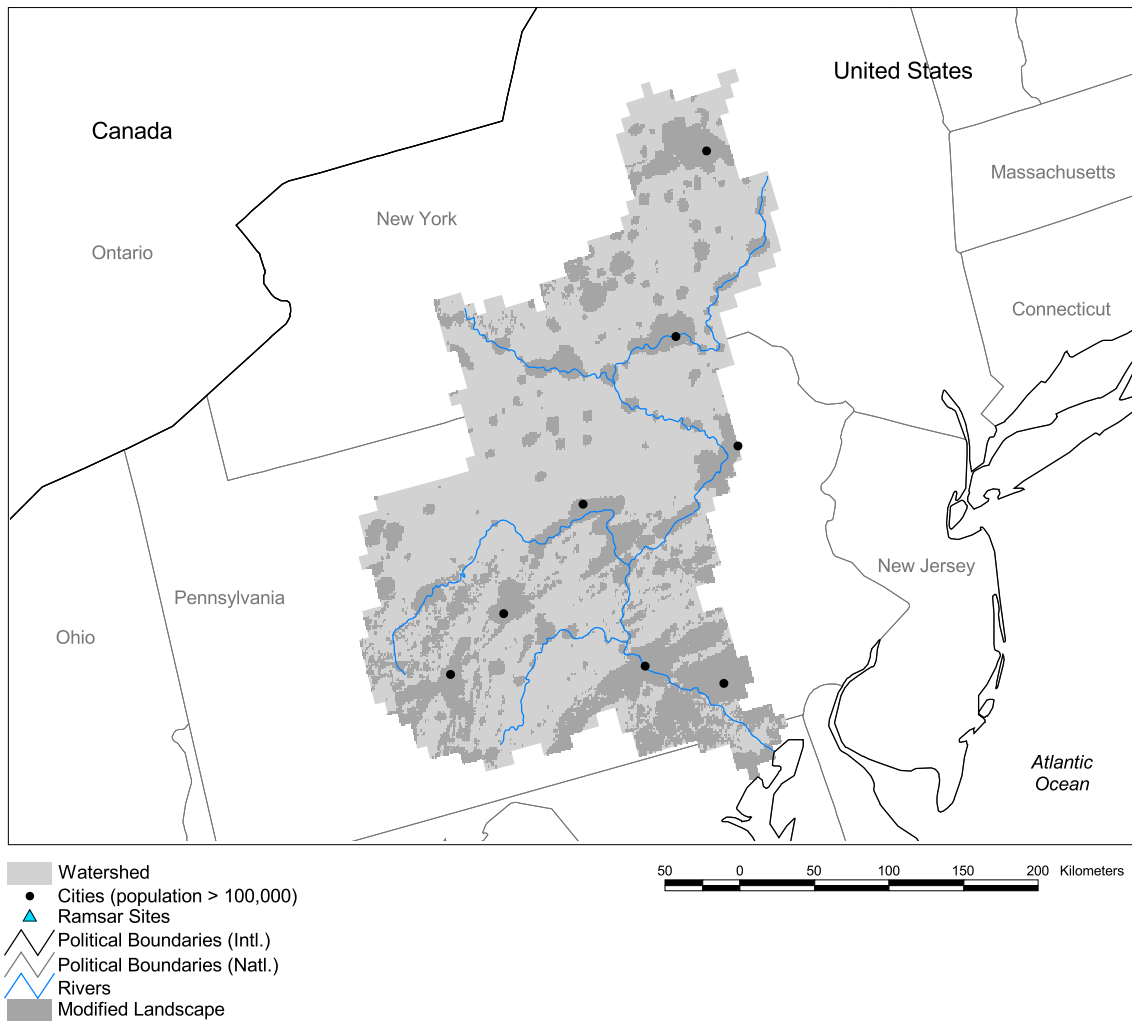


# Susquehanna Watershed



Basin area:	78,673 km <sup>2</sup>	Forest:	71%
Population density:	57 people per km <sup>2</sup>	Cropland:	7%
Urban growth rate:	-	Cropland irrigated:	0%
Large cities:	8	Developed:	22%
Total fish species:	128 (intr: 17 diad: 4)	Shrub:	0%
Fish endemics:	0	Grassland:	0%
Threatened fish species:	0	Barren:	0%
Endemic bird areas:	0	Loss of original forest:	14%
Ramsar sites:	0	Deforestation rate:	-
Protected areas:	0%	Eroded area:	7%
Wetlands:	4%	Large dams:	124
Arid:	0%	Planned major dams:	-

