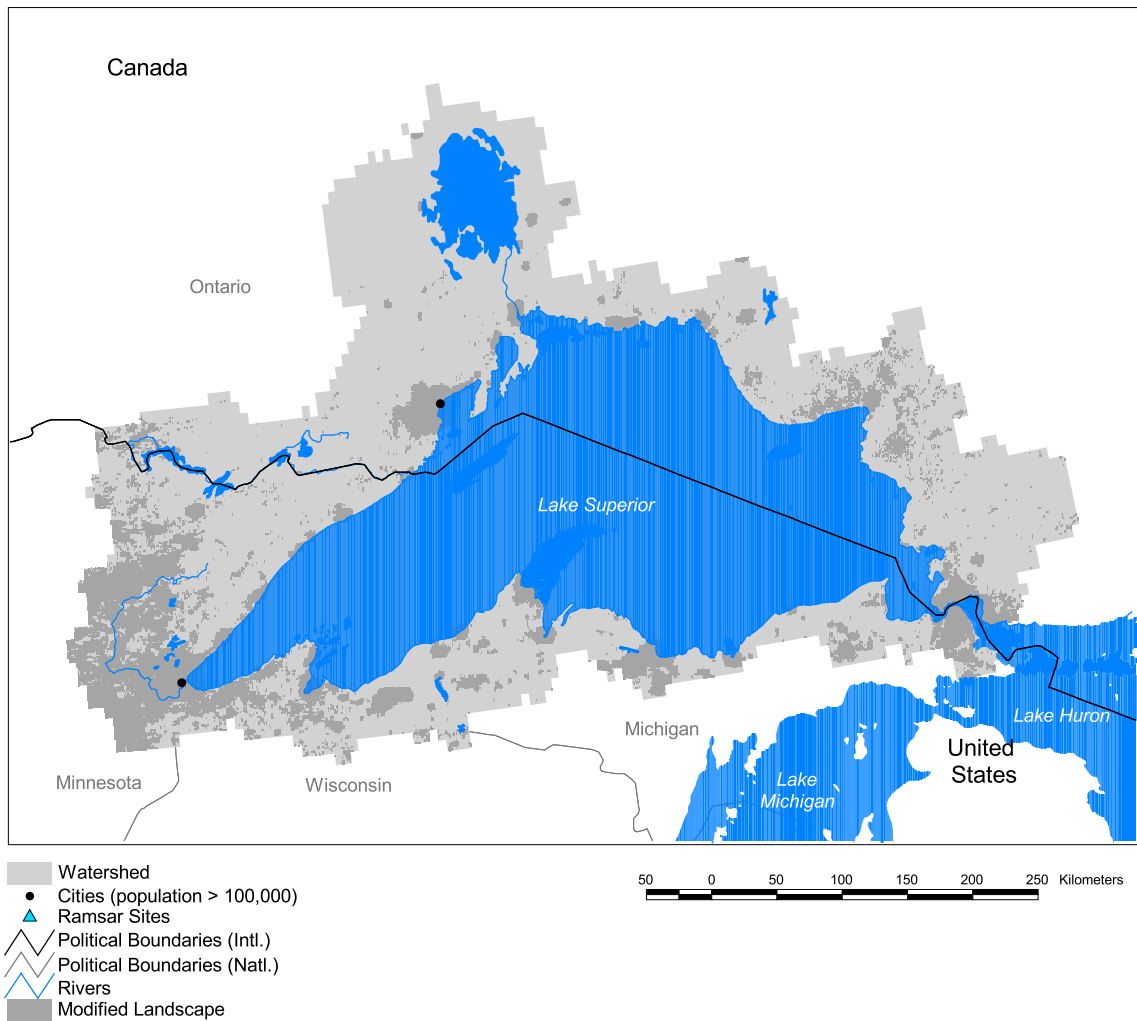


St. Lawrence Watershed: Lake Superior Subbasin



Basin area: 219,442 km²
 Population density: 4 people per km²
 Urban growth rate: -
 Large cities: 2
 Total fish species: 60 (intr: 2 diad: 3)
 Fish endemics: 0
 Threatened fish species: 4
 Endemic bird areas: 0
 Ramsar sites: 0
 Protected areas: 10%
 Wetlands: 16%
 Arid: 0%

Forest: 72%
 Cropland: 10%
 Cropland irrigated: 0%
 Developed: 10%
 Shrub: 0%
 Grassland: 0%
 Barren: 0%
 Loss of original forest: 1%
 Deforestation rate: -
 Eroded area: 0%
 Large dams: 1
 Planned major dams: -

