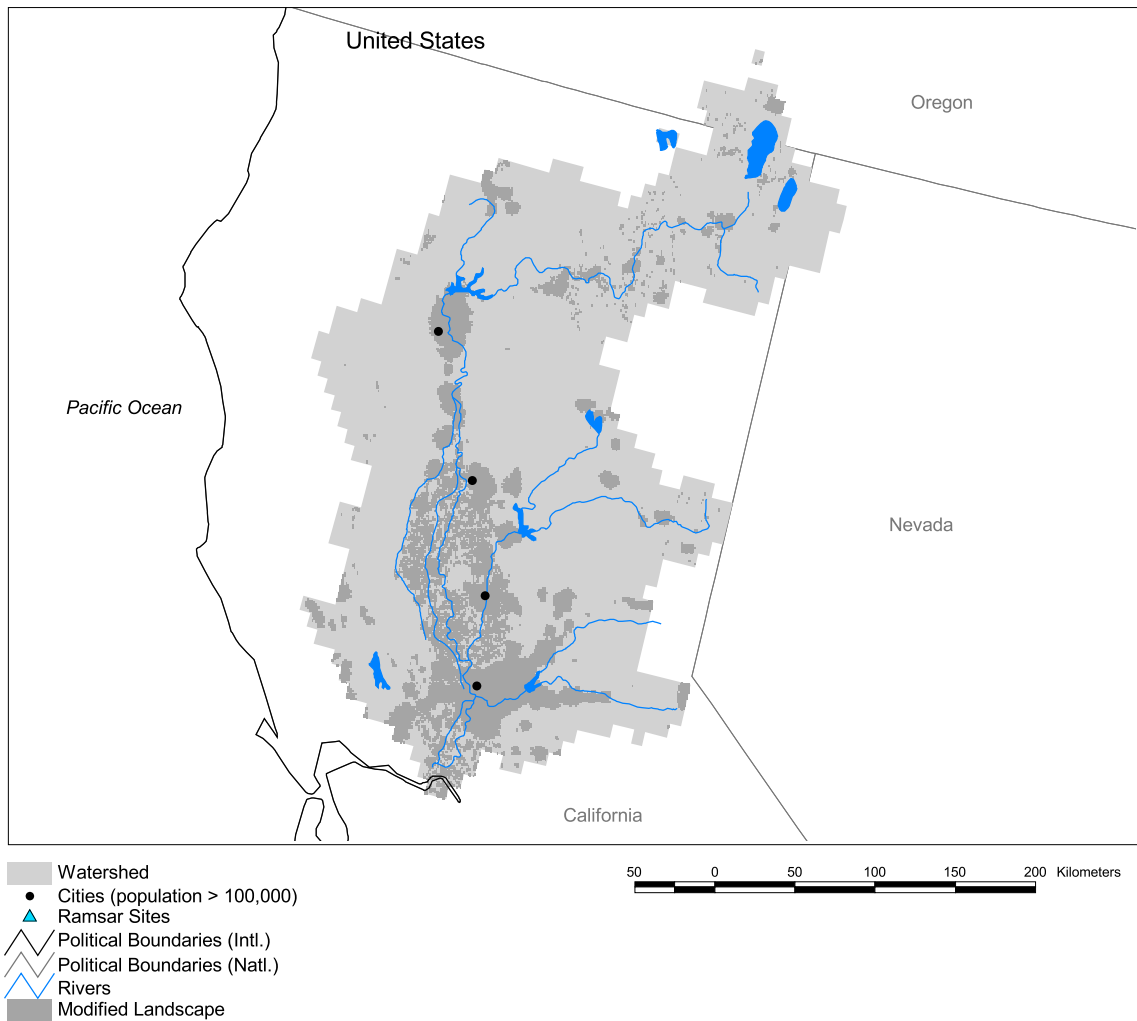


# Sacramento Watershed



Basin area:	78,773 km <sup>2</sup>	Forest:	49%
Population density:	32 people per km <sup>2</sup>	Cropland:	6%
Urban growth rate:	2.0%	Cropland irrigated:	85%
Large cities:	4	Developed:	12%
Total fish species:	- (diad: 3)	Shrub:	7%
Fish endemics:	6	Grassland:	26%
Threatened fish species:	3	Barren:	0%
Endemic bird areas:	1	Loss of original forest:	26%
Ramsar sites:	0	Deforestation rate:	-
Protected areas:	3%	Eroded area:	4%
Wetlands:	3%	Large dams:	147
Arid:	27%	Planned major dams:	-

