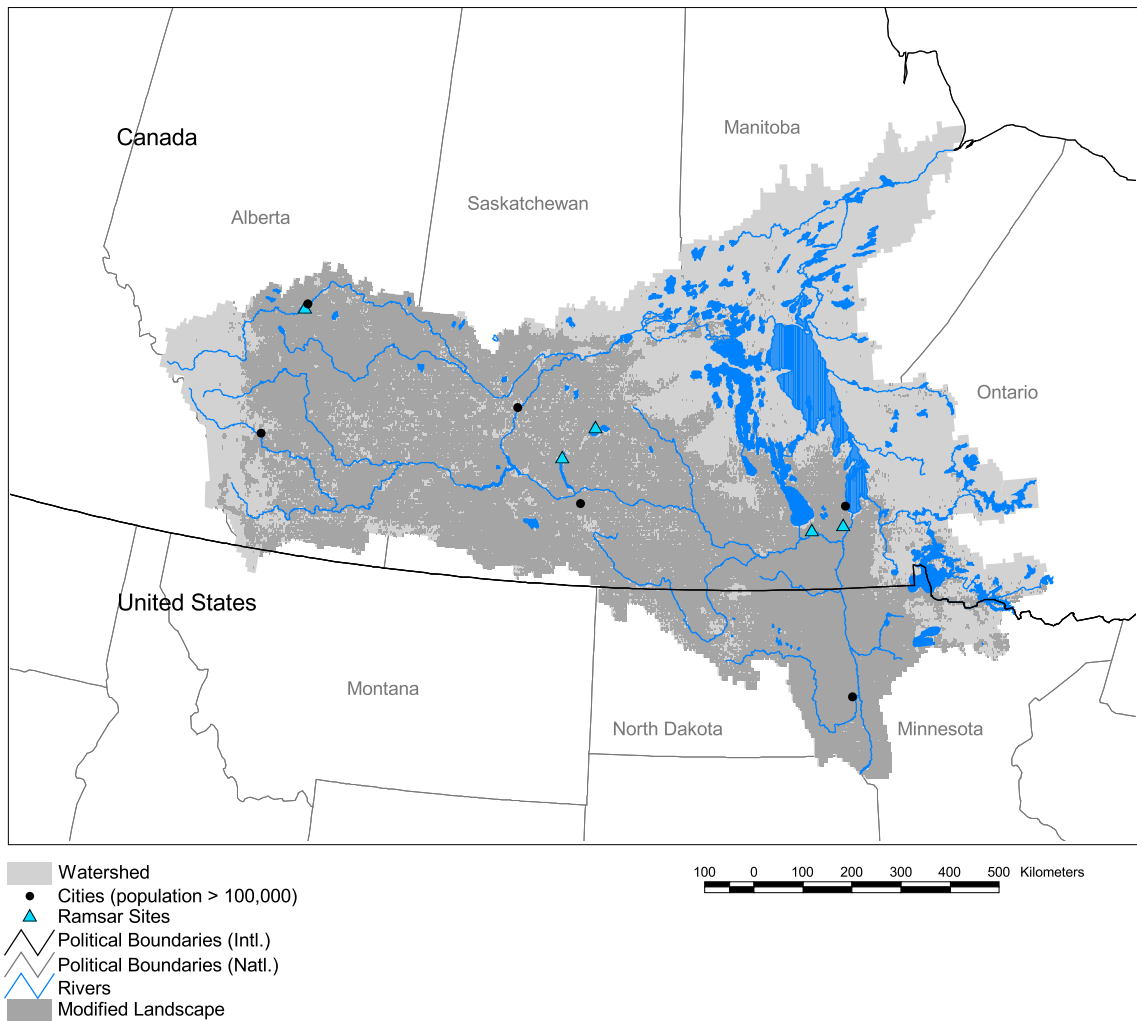


Nelson Watershed



Basin area: 1,093,442 km²
 Population density: 5 people per km²
 Urban growth rate: 1.0%
 Large cities: 6
 Total fish species: 47 (intr: 3 diad: 1)
 Fish endemics: 0
 Threatened fish species: 1
 Endemic bird areas: 0
 Ramsar sites: 5
 Protected areas: 4%
 Wetlands: 27%
 Arid: 22%

Forest: 34%
 Cropland: 51%
 Cropland irrigated: 0%
 Developed: -
 Shrub: 2%
 Grassland: 5%
 Barren: 0%
 Loss of original forest: 21%
 Deforestation rate: -
 Eroded area: 0%
 Large dams: 13
 Planned major dams: -

