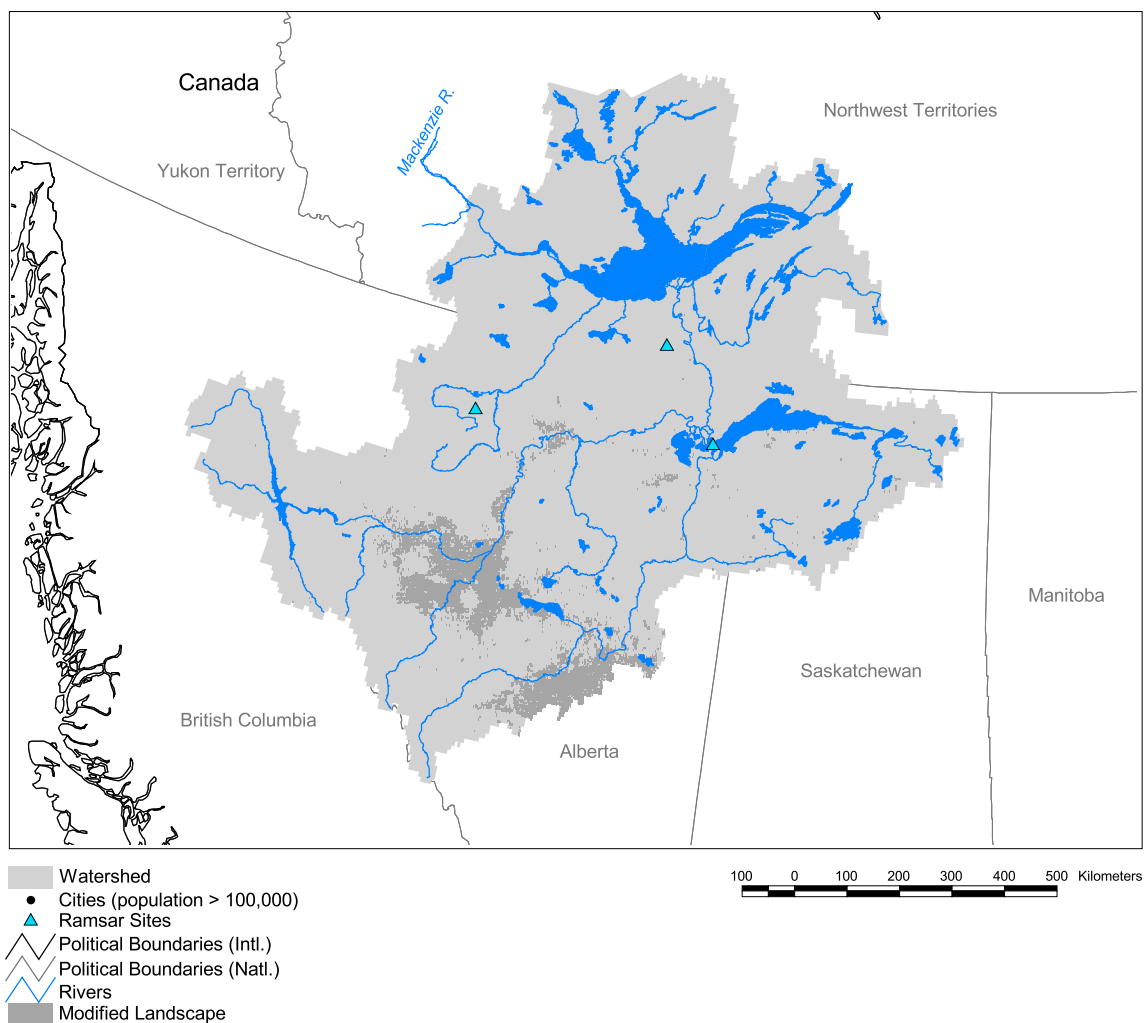


Mackenzie Watershed: Great Slave Lake Subbasin



Basin area: 972,404 km²
 Population density: < 1 person per km²
 Urban growth rate: -
 Large cities: 0
 Total fish species: 24 (intr: 0 diad: 1)
 Fish endemics: 0
 Threatened fish species: 1
 Endemic bird areas: 0
 Ramsar sites: 3
 Protected areas: 7%
 Wetlands: 24%
 Arid: 0%

Forest: 77%
 Cropland: 5%
 Cropland irrigated: 0%
 Developed: -
 Shrub: 8%
 Grassland: 2%
 Barren: 1%
 Loss of original forest: 8%
 Deforestation rate: -
 Eroded area: 0%
 Large dams: 2
 Planned major dams: -

