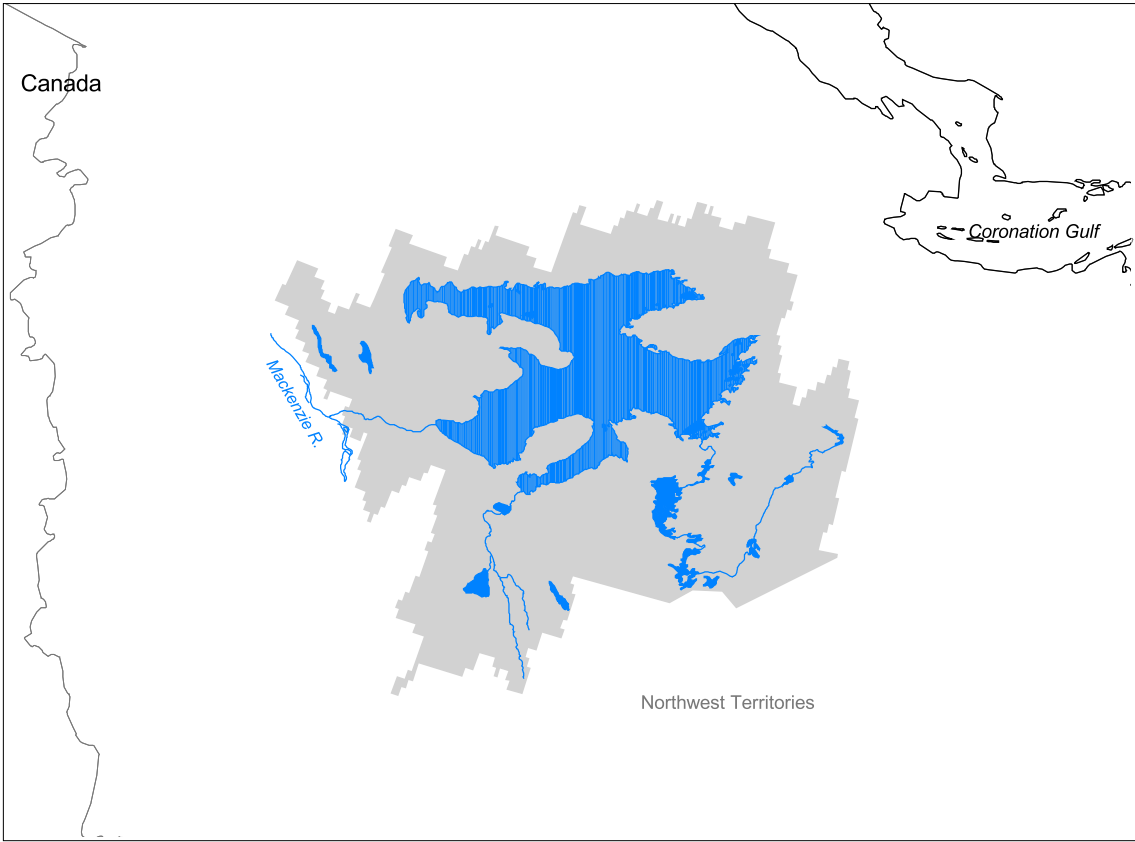


Mackenzie Watershed: Great Bear Lake Subbasin



- Watershed
- Cities (population > 100,000)
- Ramsar Sites
- Political Boundaries (Intl.)
- Political Boundaries (Natl.)
- Rivers
- Modified Landscape

50 0 50 100 150 200 250 Kilometers

Basin area:	162,207 km ²	Forest:	32%
Population density:	< 1 person per km ²	Cropland:	0%
Urban growth rate:	-	Cropland irrigated:	0%
Large cities:	0	Developed:	-
Total fish species:	16 (intr: 0 diad: 1)	Shrub:	12%
Fish endemics:	0	Grassland:	1%
Threatened fish species:	0	Barren:	7%
Endemic bird areas:	0	Loss of original forest:	1%
Ramsar sites:	0	Deforestation rate:	-
Protected areas:	0%	Eroded area:	0%
Wetlands:	11%	Large dams:	0
Arid:	0%	Planned major dams:	-

