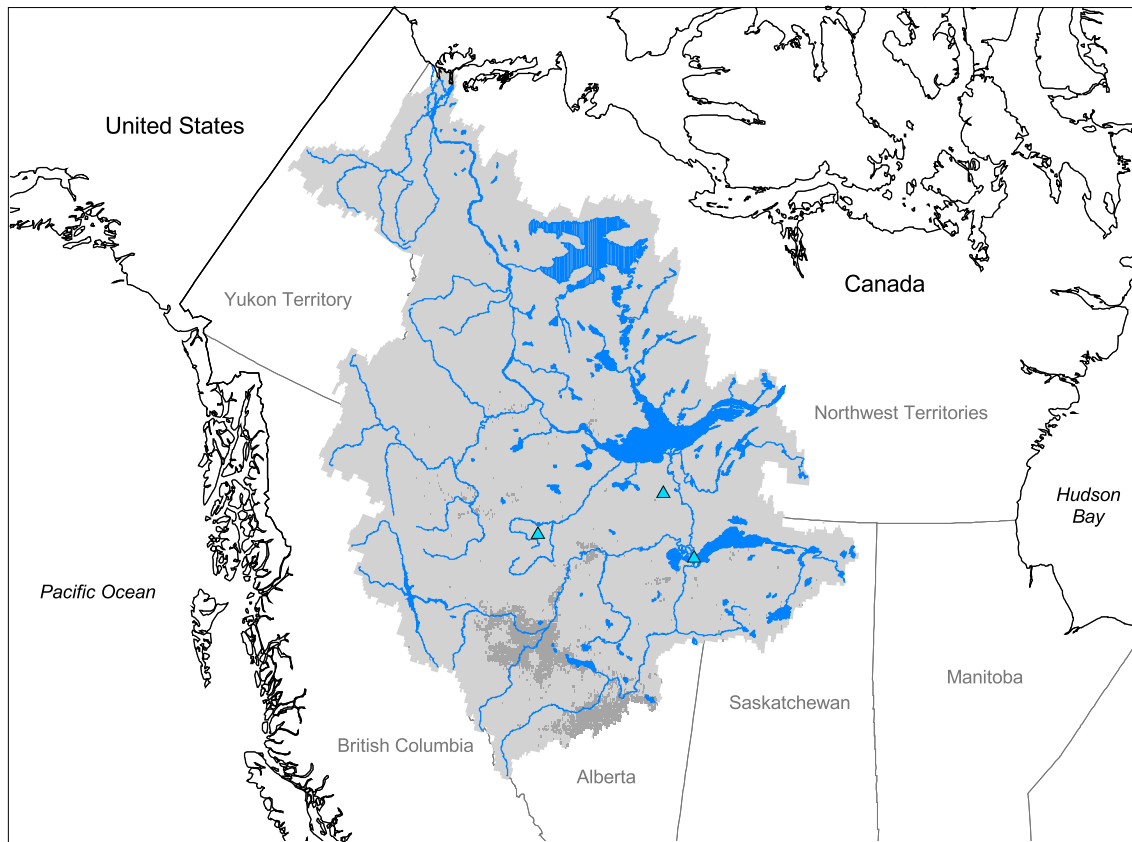


Mackenzie Watershed



- Watershed
- Cities (population > 100,000)
- Ramsar Sites
- Political Boundaries (Intl.)
- Political Boundaries (Natl.)
- Rivers
- Modified Landscape

200 0 200 400 600 800 Kilometers

Basin area: 1,743,058 km²
 Population density: < 1 person per km²
 Urban growth rate: -
 Large cities: 0
 Total fish species: 53 (diad: 5)
 Fish endemics: 0
 Threatened fish species: 0
 Endemic bird areas: 0
 Ramsar sites: 3
 Protected areas: 5%
 Wetlands: 18%
 Arid: 0%

Forest: 63%
 Cropland: 3%
 Cropland irrigated: 0%
 Developed: -
 Shrub: 18%
 Grassland: 4%
 Barren: 1%
 Loss of original forest: 7%
 Deforestation rate: -
 Eroded area: 0%
 Large dams: 2
 Planned major dams: -

Percent **Land Cover Within 5 km of Major Rivers**

