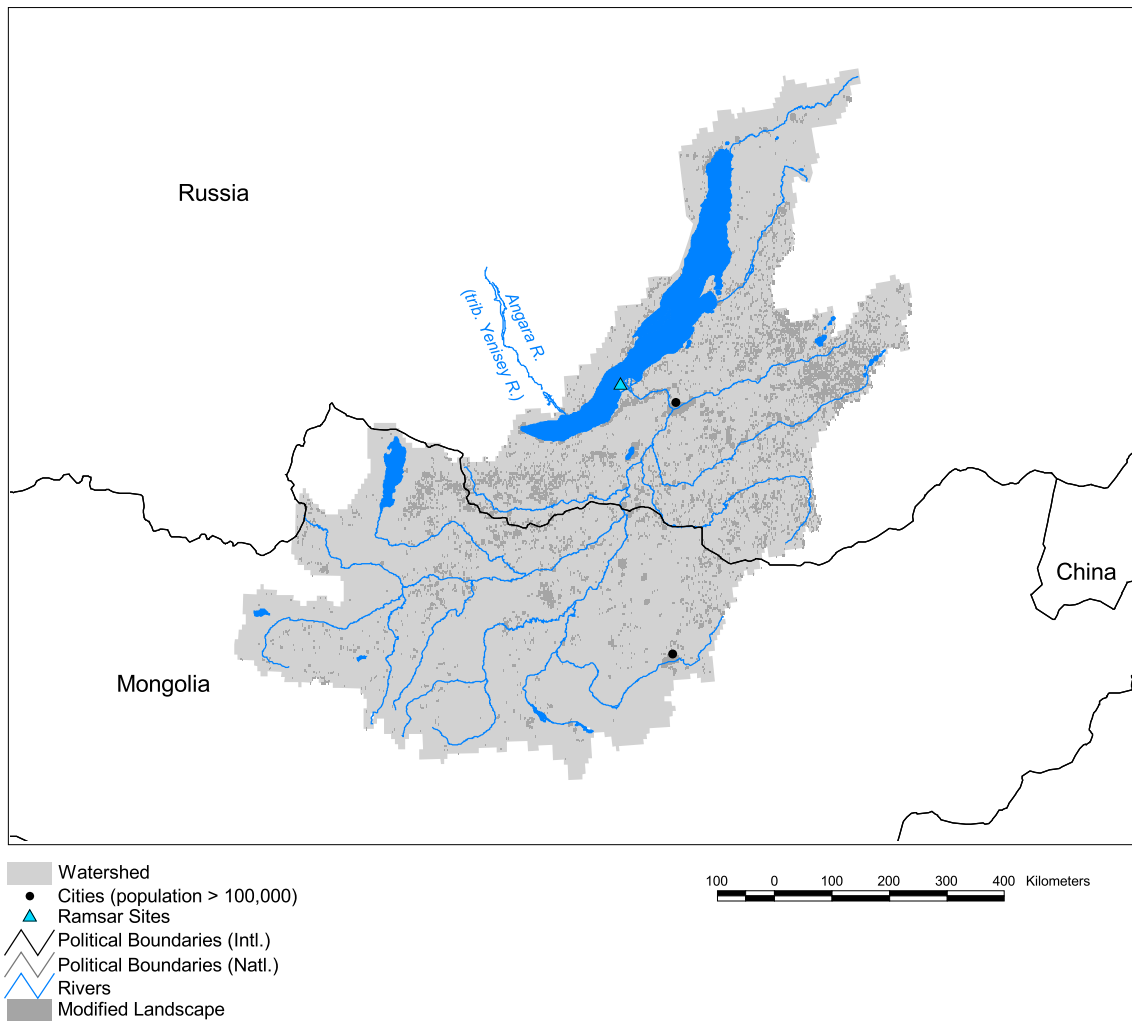


Yenisey Watershed: Lake Baikal Subbasin



Basin area:	597,253 km ²	Forest:	33%
Population density:	3 people per km ²	Cropland:	7%
Urban growth rate:	-	Cropland irrigated:	12%
Large cities:	2	Developed:	1%
Total fish species:	-	Shrub:	5%
Fish endemics:	-	Grassland:	52%
Threatened fish species:	-	Barren:	0%
Endemic bird areas:	0	Loss of original forest:	28%
Ramsar sites:	1	Deforestation rate:	-
Protected areas:	7%	Eroded area:	2%
Wetlands:	7%	Large dams:	0
Arid:	11%	Planned major dams:	-

