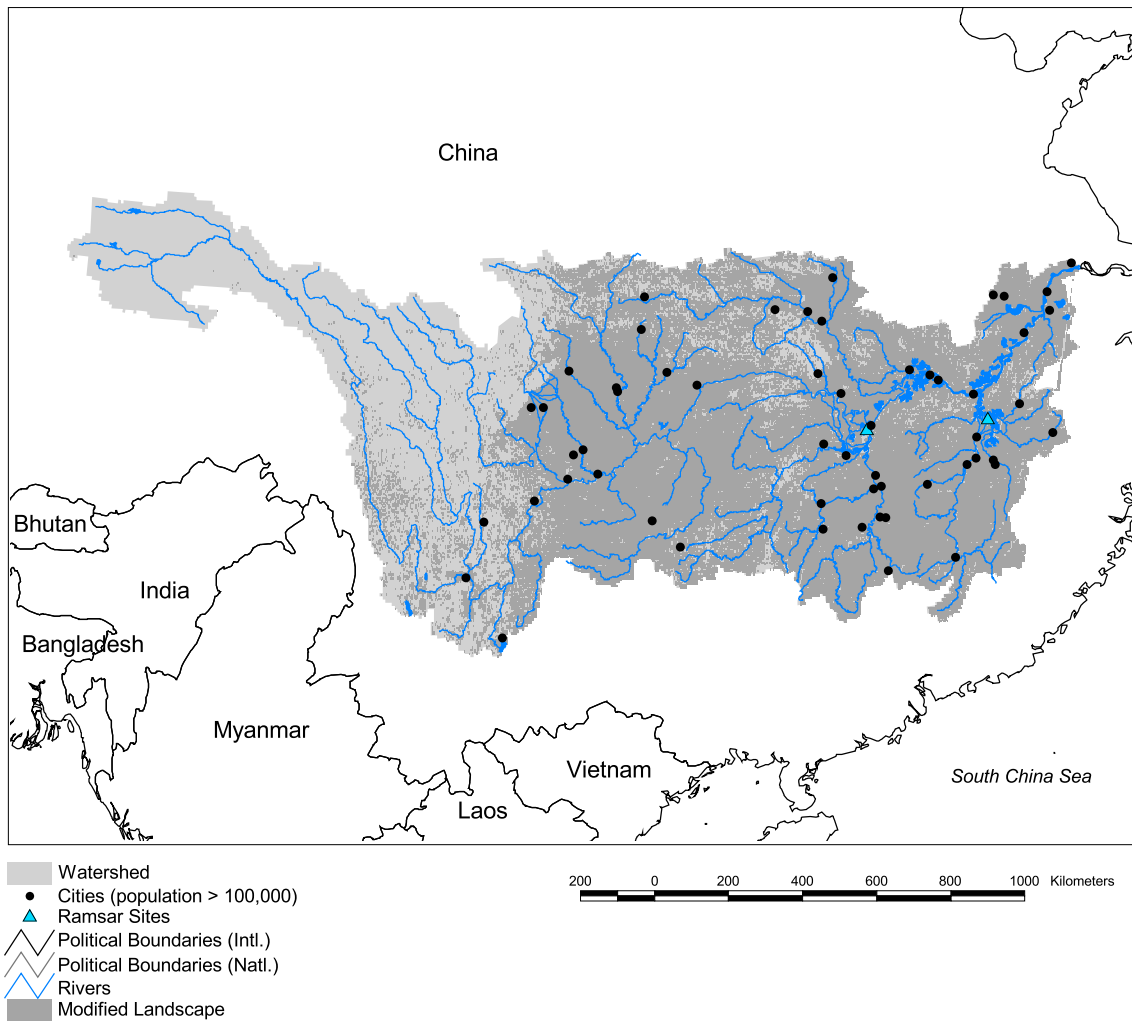


Yangtze Watershed



Basin area:	1,722,155 km ²
Population density:	224 people per km ²
Urban growth rate:	2.4%
Large cities:	56
Total fish species:	322
Fish endemics:	-
Threatened fish species:	3
Endemic bird areas:	6
Ramsar sites:	2
Protected areas:	2%
Wetlands:	3%
Arid:	0%

Forest:	11%
Cropland:	56%
Cropland irrigated:	32%
Developed:	4%
Shrub:	7%
Grassland:	22%
Barren:	0%
Loss of original forest:	85%
Deforestation rate:	-
Eroded area:	27%
Large dams:	17
Planned major dams:	11

