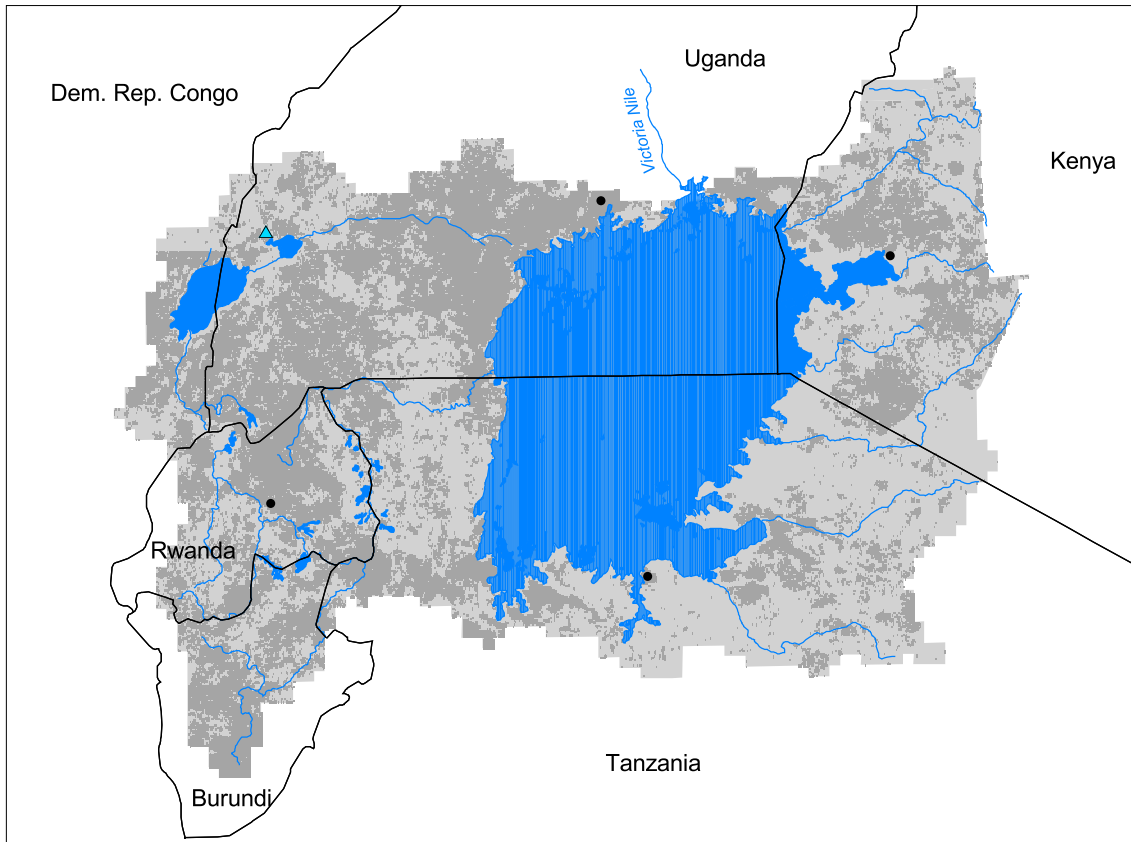


## Nile Watershed: Lake Victoria Subbasin



- Watershed
- Cities (population > 100,000)
- ▲ Ramsar Sites
- Political Boundaries (Intl.)
- Political Boundaries (Natl.)
- Rivers
- Modified Landscape

40 0 40 80 120 160 Kilometers

Basin area:	283,168 km <sup>2</sup>
Population density:	160 people per km <sup>2</sup>
Urban growth rate:	4.7%
Large cities:	4
Total fish species:	343 (intr: 5)
Fish endemics:	309
Threatened fish species:	26
Endemic bird areas:	4
Ramsar sites:	1
Protected areas:	17%
Wetlands:	31%
Arid:	26%

Forest:	9%
Cropland:	40%
Cropland irrigated:	0%
Developed:	1%
Shrub:	10%
Grassland:	37%
Barren:	2%
Loss of original forest:	89%
Deforestation rate:	7%
Eroded area:	8%
Large dams:	1
Planned major dams:	0

