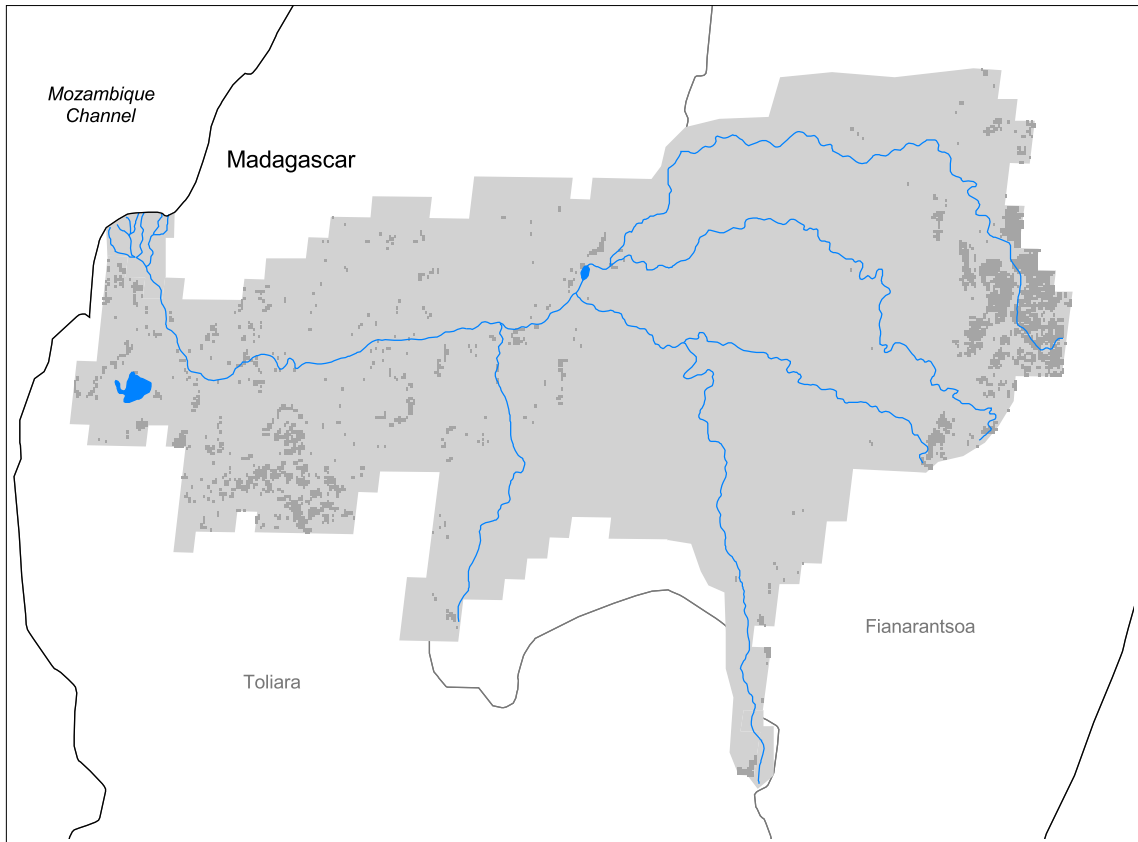


# Mangoky Watershed



- Watershed
- Cities (population > 100,000)
- ▲ Ramsar Sites
- ⚡ Political Boundaries (Intl.)
- ⚡ Political Boundaries (Natl.)
- ⚡ Rivers
- Modified Landscape

50 0 50 100 150 Kilometers

Basin area:	58,845 km <sup>2</sup>	Forest:	3%
Population density:	16 people per km <sup>2</sup>	Cropland:	5%
Urban growth rate:	-	Cropland irrigated:	0%
Large cities:	0	Developed:	< 1%
Total fish species:	8 (intr: 5)	Shrub:	0%
Fish endemics:	0	Grassland:	91%
Threatened fish species:	2	Barren:	0%
Endemic bird areas:	5	Loss of original forest:	97%
Ramsar sites:	0	Deforestation rate:	7%
Protected areas:	1%	Eroded area:	25%
Wetlands:	0%	Large dams:	0
Arid:	39%	Planned major dams:	-

