

India: The Structure of Poverty

Low-Income Households: distribution, expenditures, and access to technology

I. General Demographic and Economic Data

Population, 2002	1,041,144,000
Number of Households, 2002	191,864,088
GNI, Atlas method (million current US\$), 2002	501,532
GNI, PPP (million current international \$), 2002	2,690,815
GNI per capita	482

Sectoral GDP--Percent of GDP earned by

Agriculture, 2000	25%
Industry, 2000	27%
Services, 2000	48%

Trade in Goods and Services (million current \$US)

Imports, 2000	75,656
Exports, 2000	63,764

Exports as a percent of GDP, 2000

Balance of Trade, 2000 (million current \$US)	14%
	-11,892

II. Income Distribution and Market Size by Income Level

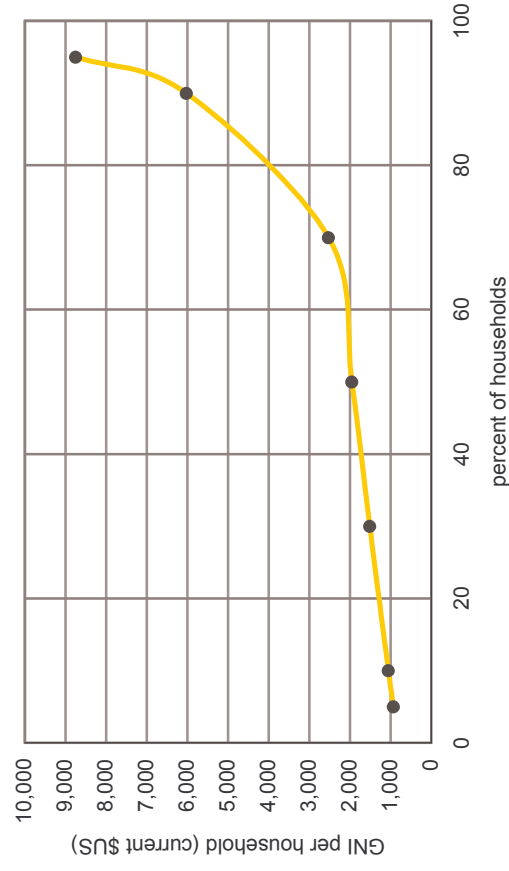
Percentage share of income or consumption (organized as a percent of total population)

Year of survey	1997
Income share held by lowest 10%	3.5
Income share held by lowest 20%	8.1
Income share held by second 20%	11.6
Income share held by third 20%	15.0
Income share held by fourth 20%	19.3
Income share held by highest 20%	46.1
Income share held by highest 10%	33.5

GNI per household based on percentiles

percentile of hold population	Household GNI (current \$US)	Household GNI (current \$intl)
5	925	4,965
10	1,053	5,652
30	1,515	8,127
50	1,954	10,483
70	2,526	13,555
90	6,021	32,306
95	8,749	46,940

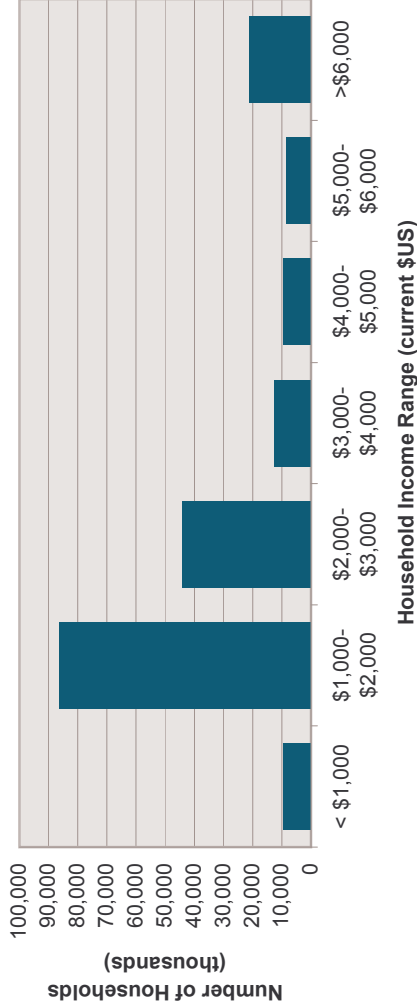
Income Distribution by Percent of Households, India



II. Income Distribution and Size of Markets, continued

Income distribution by income bracket (in current US dollars)	% of households	number of households
Household Income Range (current \$US)		
< \$1,000	5	9,593,204
\$1,000-\$2,000	45	86,338,840
\$2,000-\$3,000	23	44,128,740
\$3,000-\$4,000	6.5	12,471,166
\$4,000-\$5,000	5	9,593,204
\$5,000-\$6,000	4.5	8,633,884
>\$6,000	11	21,105,050
Total	100	191,864,088

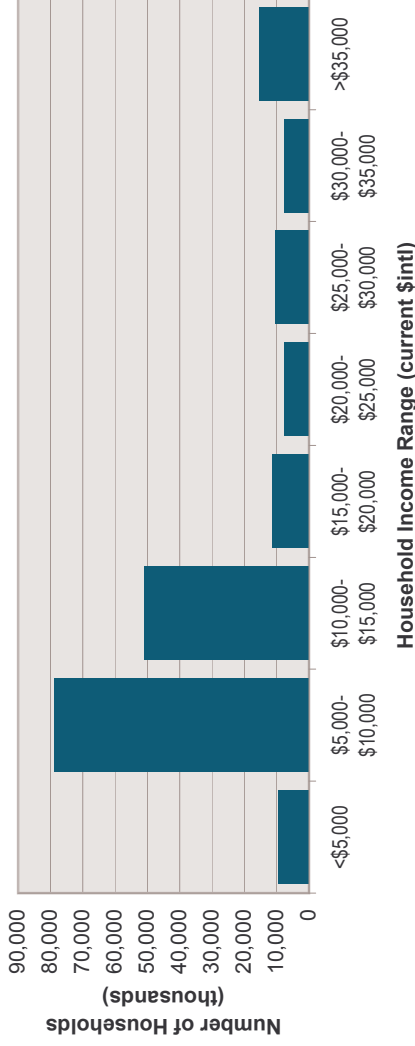
Household Distribution by Income Level, India (\$US)



Income distribution by income bracket (in current international dollars)

Household Income Range (current \$intl)	% of households	number of households
<\$5,000	5	9,593,204
\$5,000-\$10,000	41	78,664,276
\$10,000-\$15,000	26.5	50,843,983
\$15,000-\$20,000	6	11,511,845
\$20,000-\$25,000	4	7,674,564
\$25,000-\$30,000	5.5	10,552,525
\$30,000-\$35,000	4	7,674,564
>\$35,000	8	15,349,127
Total	100	191,864,088

Household distribution by income level, India (\$international)



In the chart and table above, household income has been converted to international dollars using Purchasing Power Parity (PPP) rates. An international dollar has the same purchasing power in a given country as a US dollar does in the United States.

Total Market size (in US dollars):

"C" market (annual household income <US\$3,000):

\$244,051,120,373

"B" market (annual household income US\$3,000-US\$6,000):

\$134,304,861,841

III. Poverty Rates

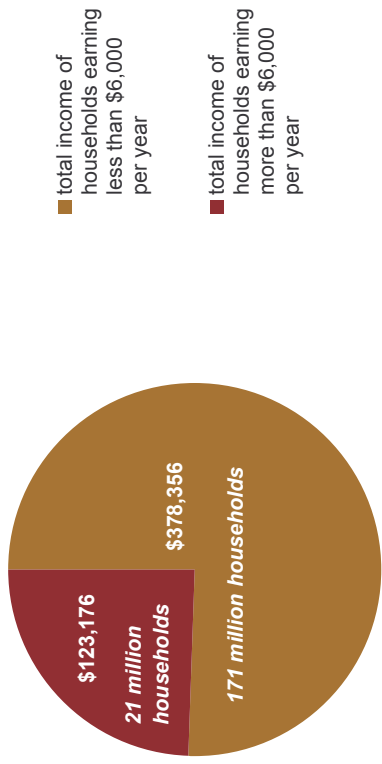
Poverty Rates using the National Poverty Line:

Year of Survey:	1999-2000
National poverty rate:	29%
Urban poverty rate:	25%
Rural poverty rate:	30%

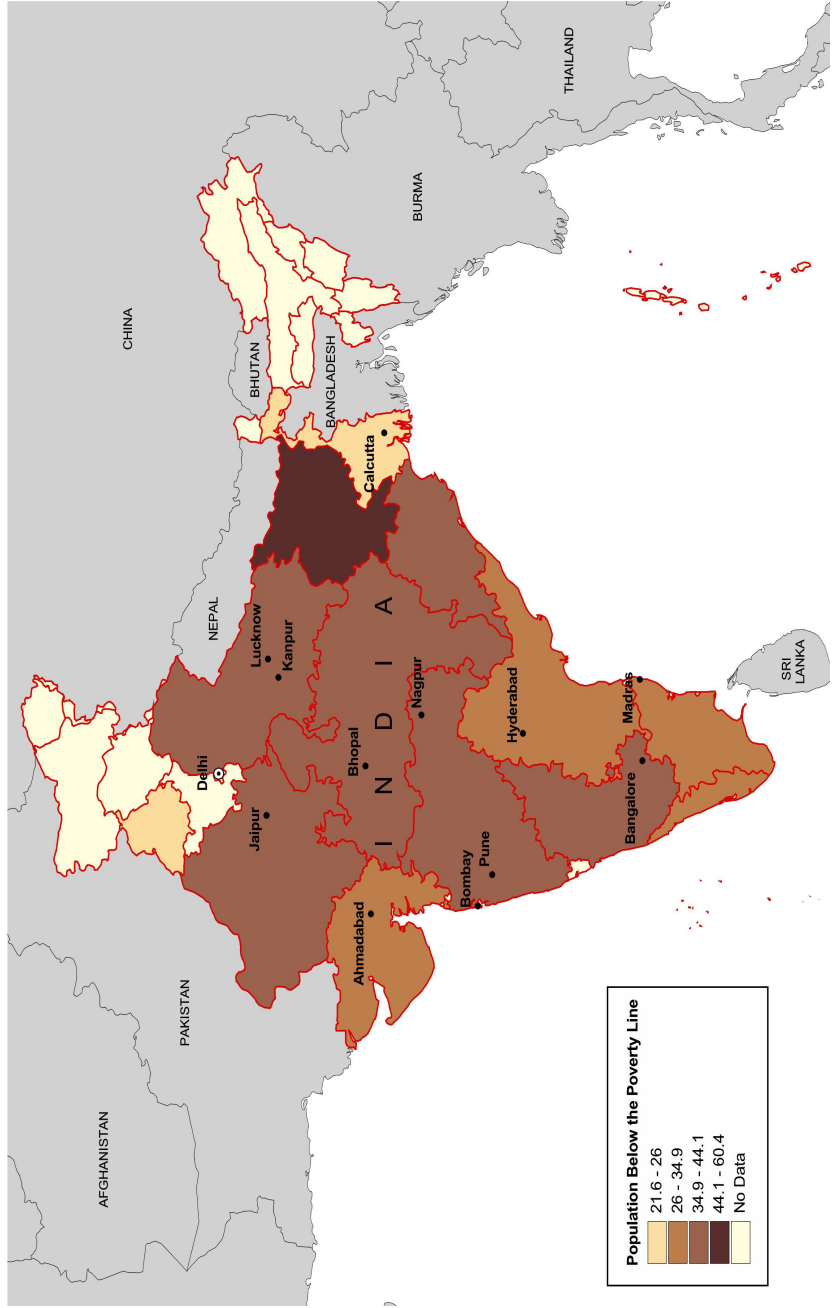
Poverty Rates using the International Poverty Line

Year of Survey:	1999-2000
Population living on <\$1 a day	35%
Population living on <\$2 a day	80%

India: Total Annual Household Income (in million \$US), 2002



India: Poverty Rates by Province, 2000

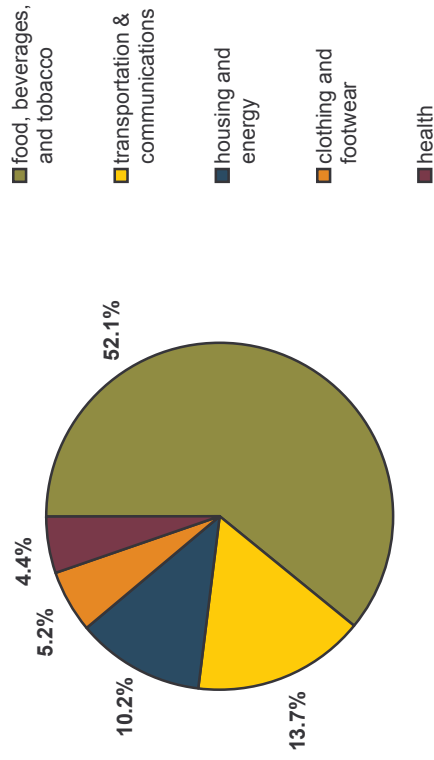


IV. Consumption

Structure of household expenditures (1998-99)

Percent of total consumption on:	Percent
food, beverages, and tobacco	52.1%
transportation & communications	13.7%
housing and energy	10.2%
clothing and footwear	5.2%
health	4.4%

Household expenditures (percent of total), 1998-99



V. Access to Information and Technology

Technology Access: Number of Users per 1,000 population

	India	Asia (excl. Middle East)	World
Internet users, 2002	16	57	96
Phone lines, 2002	40	115	169
Mobile phone subscriptions, 2002	15	129	184
Radios, 1997-2000	121	258	264
Television sets, 2000	78	204	419

Number of Internet hosts, 2001: 82,979

Access to Information and Technology, 1999-2002

