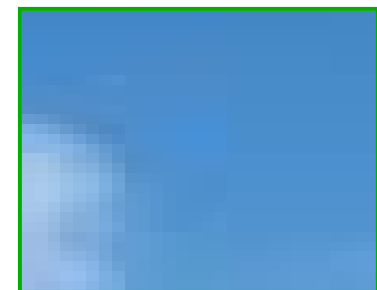


CPI Today: The Need for New Generation

- ◆ *CPI is committed to providing reliable, affordable, and sustainable electricity to our customers*
- ◆ *CPI will need to add several additional baseload generating units in our region over the next decade*
- ◆ *CPI has a history of environmental compliance and good relationships with the community*
- ◆ *CPI will continue to focus on coal for baseload generation and support our local, coal-based economy*



We are committed to the success of the Greentown GCS program



- ◆ *We believe that GCS will help the continuation of clean, assured power to the state and region*
- ◆ *We will use well tested, advanced technology to comply with the new tax requirements*
- ◆ *We are working with regulators and both state and local agencies to ensure safe and legal operations*
- ◆ *We hope the Greentown CCS project will serve as a flagship program for CPI, the state, and the nation*

We are committed to serving the community and engaging with all parties

- ◆ *We are committed to learning from all stakeholders and understanding and addressing local concerns*
- ◆ *We are seeking your assistance in the success of the Greentown project*



We will be contacting you



- Please leave your card with us or sign up at our participant list at the desk
- We are available at:
 - S. Julio Friedmann, COO, 999-984-5842, friedmann2@cpi.net
 - Iain Wright, Senior Technology Advisor 999-998-0089, wright@cpi.net
 - Judith Bradbury, Outreach Coordinator, 999-432-2344, jbradbury@verizon.net