



# ***CleanPower Inc. and Carbon Capture and Sequestration in the Green Basin***

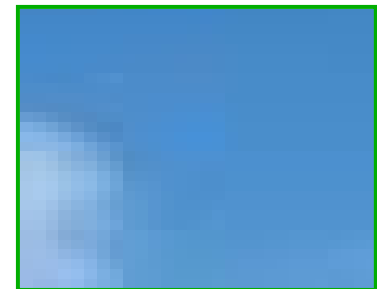
***October 20, 2006***

***CleanPower Inc (CPI)  
S. Julio Friedmann, Chief Operations Officer***

## CPI Today: The Need for New Generation

---

- ◆ *CPI is committed to providing reliable, affordable, and sustainable electricity to our customers*
- ◆ *CPI will need to add several additional baseload generating units in our region over the next decade*
- ◆ *CPI has a history of environmental compliance and good relationships with the community*
- ◆ *CPI will continue to focus on coal for baseload generation and support our local, coal-based economy*

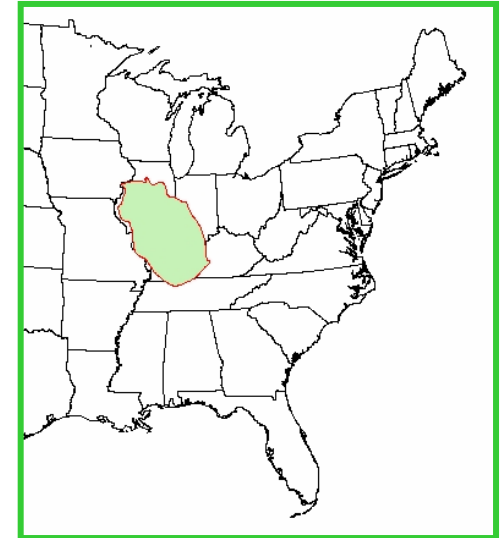


## CPI and the new CO<sub>2</sub> emissions tax

---



- ◆ *The US Government has moved recently to tax CO<sub>2</sub> emissions in order to reduce greenhouse gas emissions*
- ◆ *This tax is currently at \$35/ton CO<sub>2</sub>*
- ◆ *Continued, secure delivery of electricity is best served through a set of measures including efficiency, increased renewable power, and carbon capture and sequestration (CCS)*
- ◆ *CPI believes that CCS technology will be required on future fossil-fueled units*
- ◆ *We believe that there are opportunities for CCS within the current portfolio of plants within the Green Basin*
- ◆ *This project will help ensure long-term viability of the CPI Greentown plant*



**We plan to capture and separate CO<sub>2</sub> emissions from our plant using well established technology**

---



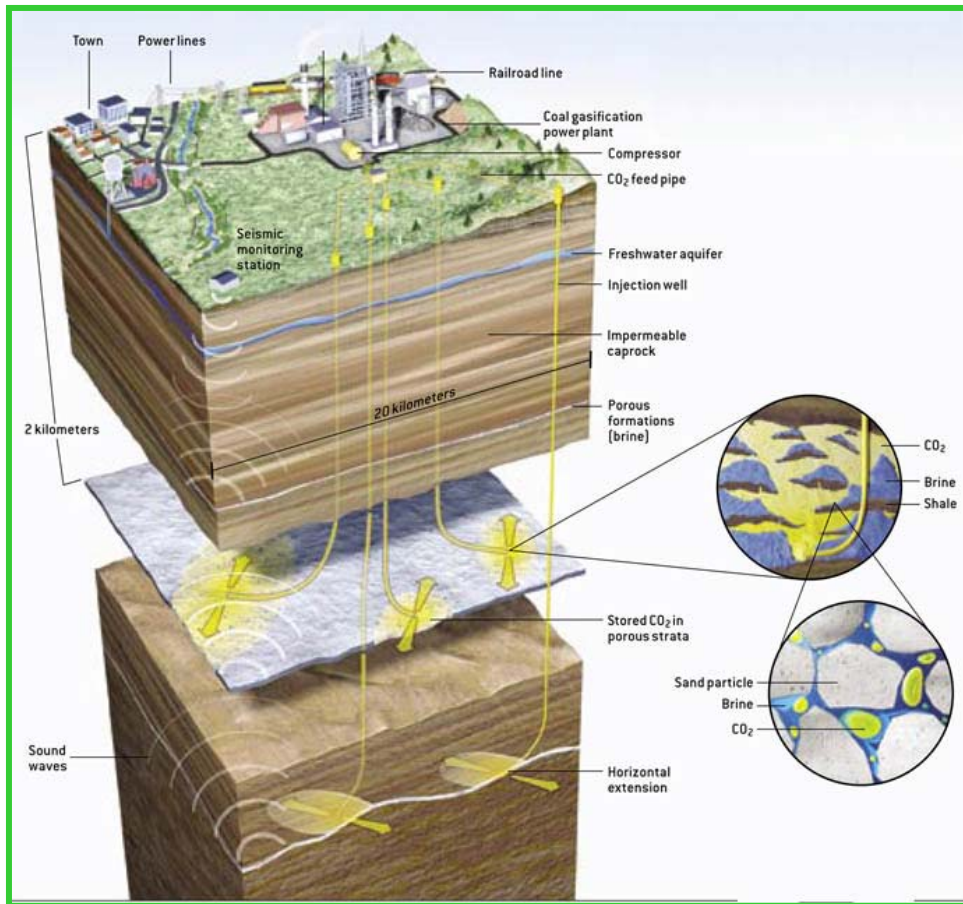
Coal-Fired Power Plant Flue Gas  
(Oklahoma, USA)

- ◆ ***The technique, amine scrubbing, has been used on power plants in the US***
- ◆ ***This will produce a near-pure stream of CO<sub>2</sub> for sequestration***
- ◆ ***Pollution will be further reduced***
- ◆ ***This will unfortunately reduce the total plant power output***



## Role-Play Exercise

**The most promising site to store CO<sub>2</sub> is a saline formations more than a mile underground**



- ◆ ***The technology to inject CO<sub>2</sub> safely at depth is well tested and understood by scientists and engineers***
- ◆ ***Permitting of the well, including a public hearing, is required by the Greenstate Environmental Regulatory Division***
- ◆ ***We plan to monitor and verify the movement of CO<sub>2</sub> in the formation during and after injection***

## **CleanPower Inc. is committed to the highest level of public services**

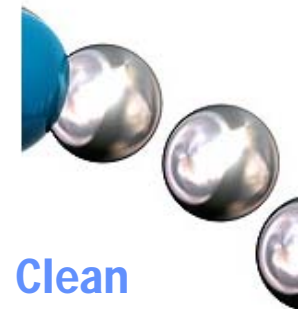
---



- ◆ *We have begun a conversation with regulators to understand our responsibilities and best options*
- ◆ *We have hired expert consultants to advise us in the process of site selection and sequestration*
- ◆ *We have begun the process of characterizing the proposed site in detail*
- ◆ *With your help, we will be developing our public information and involvement program*



**Trusted  
Advisor  
Inc.**



**Clean  
Technologies**

***CleanPower Inc. serves the residents of Greentown and you, its representatives. We would like know how you would most like to be involved and informed***

## **We will be contacting you**



- Please leave your card with us or sign up at our participant list at the desk
- We are available at:
  - Iain Wright, Senior Technology Advisor 999-998-0089, [wright@cpi.net](mailto:wright@cpi.net)
  - Judith Bradbury, Outreach Coordinator, 999-432-2344, [jbradbury@verizon.net](mailto:jbradbury@verizon.net)