

Community Engagement for CCS

Sarah Forbes

CCS Project Director
Climate and Energy Program
World Resources Institute

April 23, 2009





CCS

Is not just about **coal**...

It's about **climate change**



Flickr: Dizzy Atmosphere



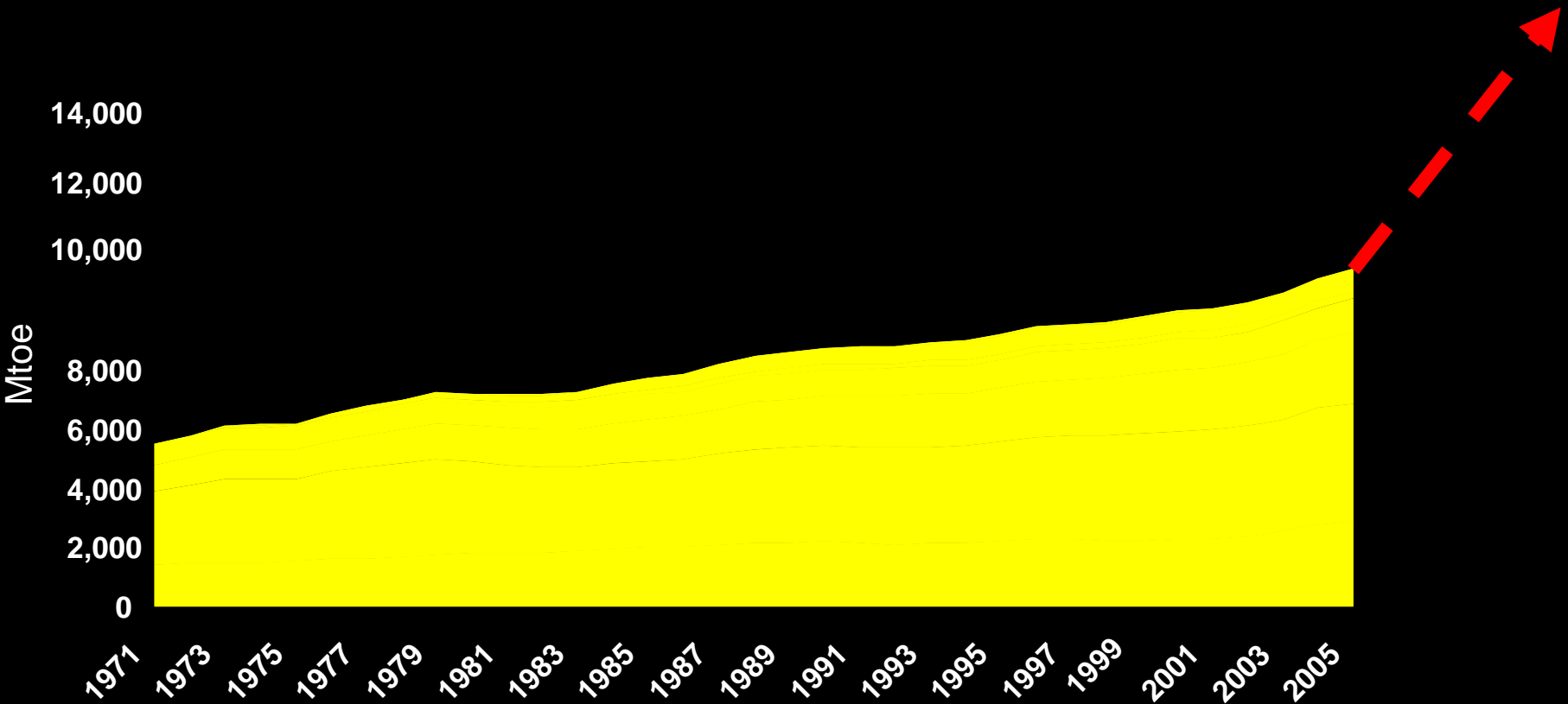
Flickr: Daunting Panda



Flickr: A Guy with a Camera



CO₂ emissions expected to increase **130%** between now and 2050



Source: IEA, 2008 Energy Technology Perspectives



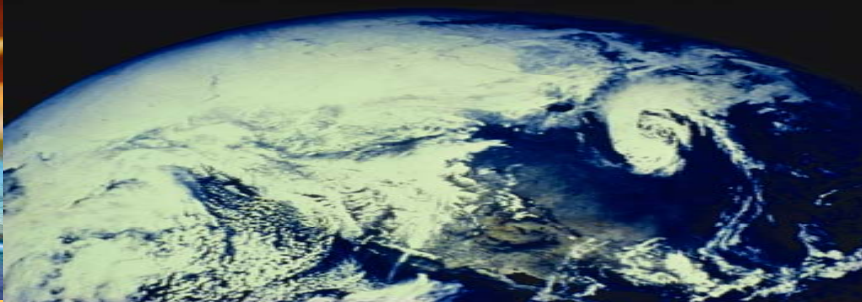
CCS is projected to deliver **20%**
of the total reductions needed
to cut global emissions by 50%
by 2050

Source: IEA, 2008 Energy Technology Perspectives



Breaking Barriers for Safe, Cost Effective and Timely Deployment of CCS





CCS Constraints

- Technology
- Cost
- Public opinion

Influenced by safety,
environmental protection
and cost



Overcoming barriers

- **With demonstration:**
 - Technology learning
 - Performance guarantees
 - Lower costs
- **Public acceptance**
 - Need clear rules for environmental protection
 - Need to engage local communities



Flickr Remuz



Strategic Project Focus

- Research and analysis
- Outreach
- Convening stakeholders
- International engagement



CCS GUIDELINES



Guidelines for
Carbon Dioxide Capture, Transport and Storage

Developed
based on a
stakeholder
process and
published in
October, 2008

Lessons from Guideline Development and Analysis...

- Balance humility and confidence
- Flexibility driven by need for site-specific data
- Post-closure stewardship questions remain
- Potential interaction among projects should be evaluated



Developing CCS Guidelines for China



Carbon Sequestration
Laboratory



清华大学低碳能源实验室
LABORATORY OF **LOW CARBON ENERGY**
TSINGHUA UNIVERSITY



WORLD
RESOURCES
INSTITUTE

Build it here?



Flickr Rainforest Action Network

Principles for Meaningful Community Engagement

(1) Identify stakeholders early.

(2) Define the intended outcomes of community engagement.

(3) Determine whether to inform, consult, or negotiate.

(4) Engage communities throughout the project cycle.

(5) Allow communities to raise grievances.

(6) Promote internal and external monitoring.

Concept

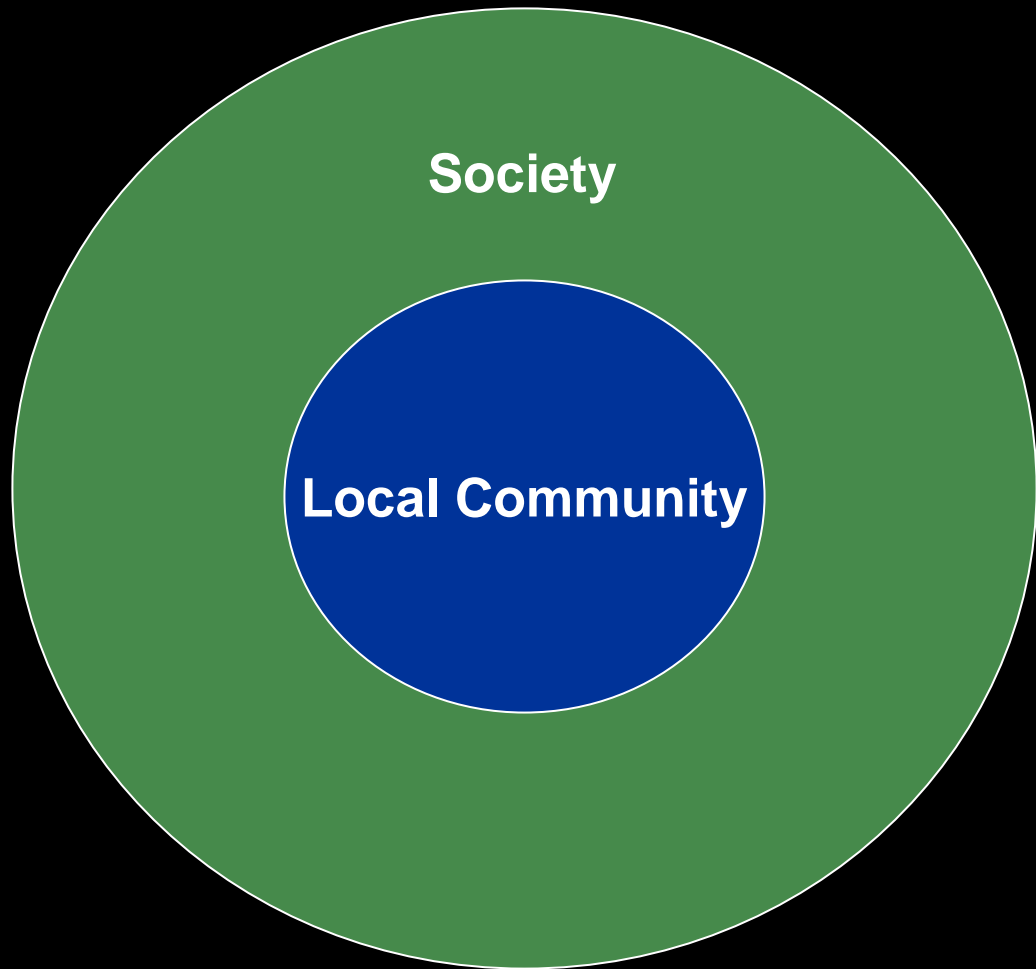
Design

Construction

Operation

Decommissioning





Guidelines for how to best engage communities

- Effective community engagement critical for the success of CCS demonstrations
- WRI will Conduct a stakeholder process including representatives from industry, government, and local citizens facing decisions about CCS projects (April-September 2009)
- Objective will be to develop a set of guidelines, a tool for businesses and communities to use in determining how to best engage local communities regarding CCS technologies (March 2010)



Welcome to the working group!

- Meetings will be conducted under Chatham House rules
- The process starts today!
 - Setting scope and audience
 - Begin discussing key issues
 - Form smaller working groups on key issues, if warranted



Questions?

Sarah Forbes
202-729-7714
sforbes@wri.org

