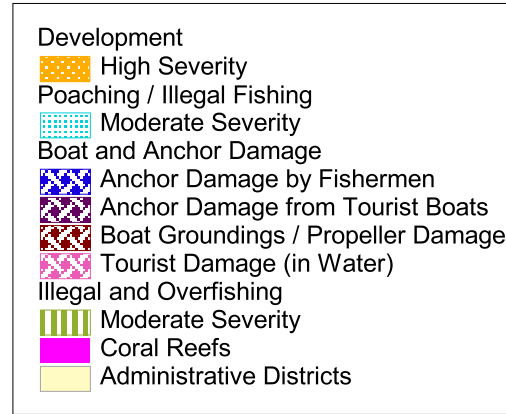
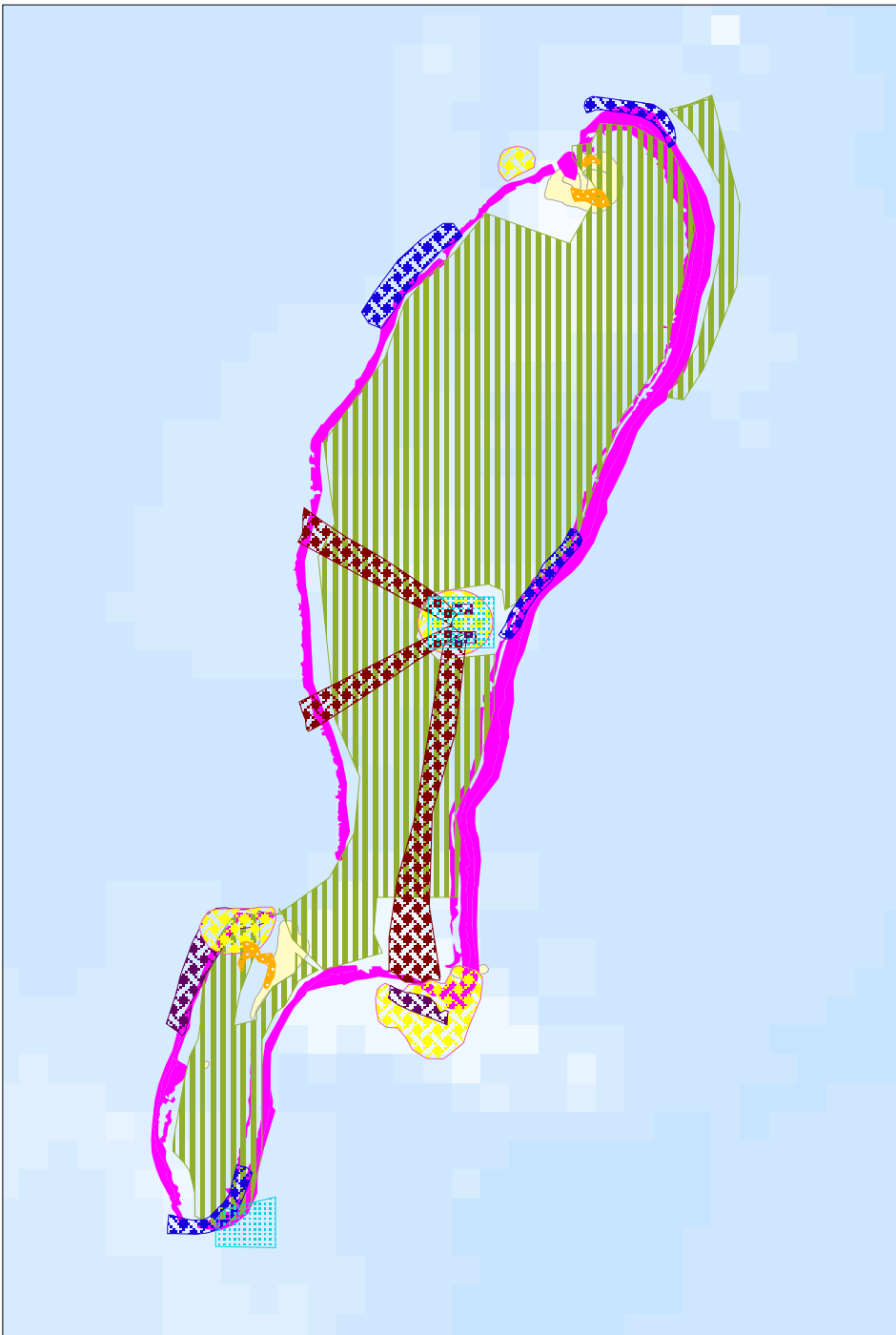


Lighthouse Reef - Key Threats from Expert Mapping

Local stakeholders and scientists at a threat analysis and mapping workshop for Lighthouse Reef identified overfishing, illegal fishing, development of cayes, and physical damage from recreation (anchors and snorkelers) as key threats to Lighthouse Reef. Illegal and over-fishing were mapped as the most pervasive threat to Lighthouse Reef. Poaching was identified as a moderate threat in the Blue Hole and South Point No-Take areas. Development was identified as a threat on Northern Two Caye, Sandbore Caye, and Philips Long Caye. Damage from boat propellers and groundings were identified as a threat along approaches to the Blue Hole. Anchor damage by fisherman and tourist boats were mapped as a threat along many sections of the atoll, while damage from tourists was mapped at the Blue Hole, and near the three cayes.



Data Sources: From a "Belize Threat Assessment and Mapping" workshop for Lighthouse Reef, hosted by Belize Audubon Society and Wildlife Conservation Society in October, 2004.

Reefs at Risk in Belize

A collaboration between the World Resources Institute, Belize Coastal Zone Management Authority and Institute, and many other partner organisations in Belize. Datasets available on the Belize Coastal Data CD (email datacen@coastalzonebelize.org for more information).