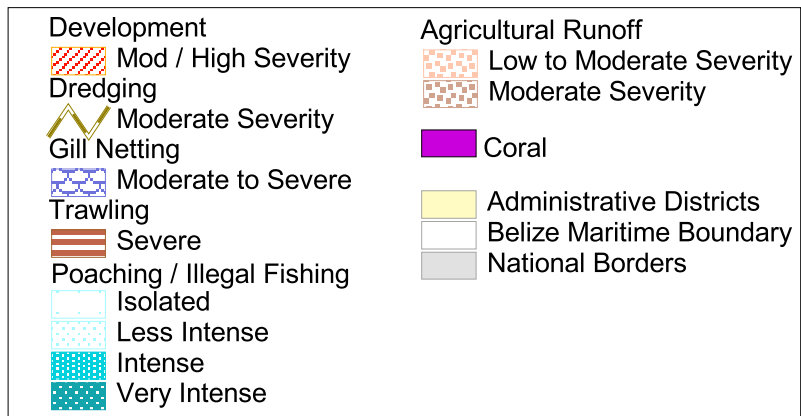
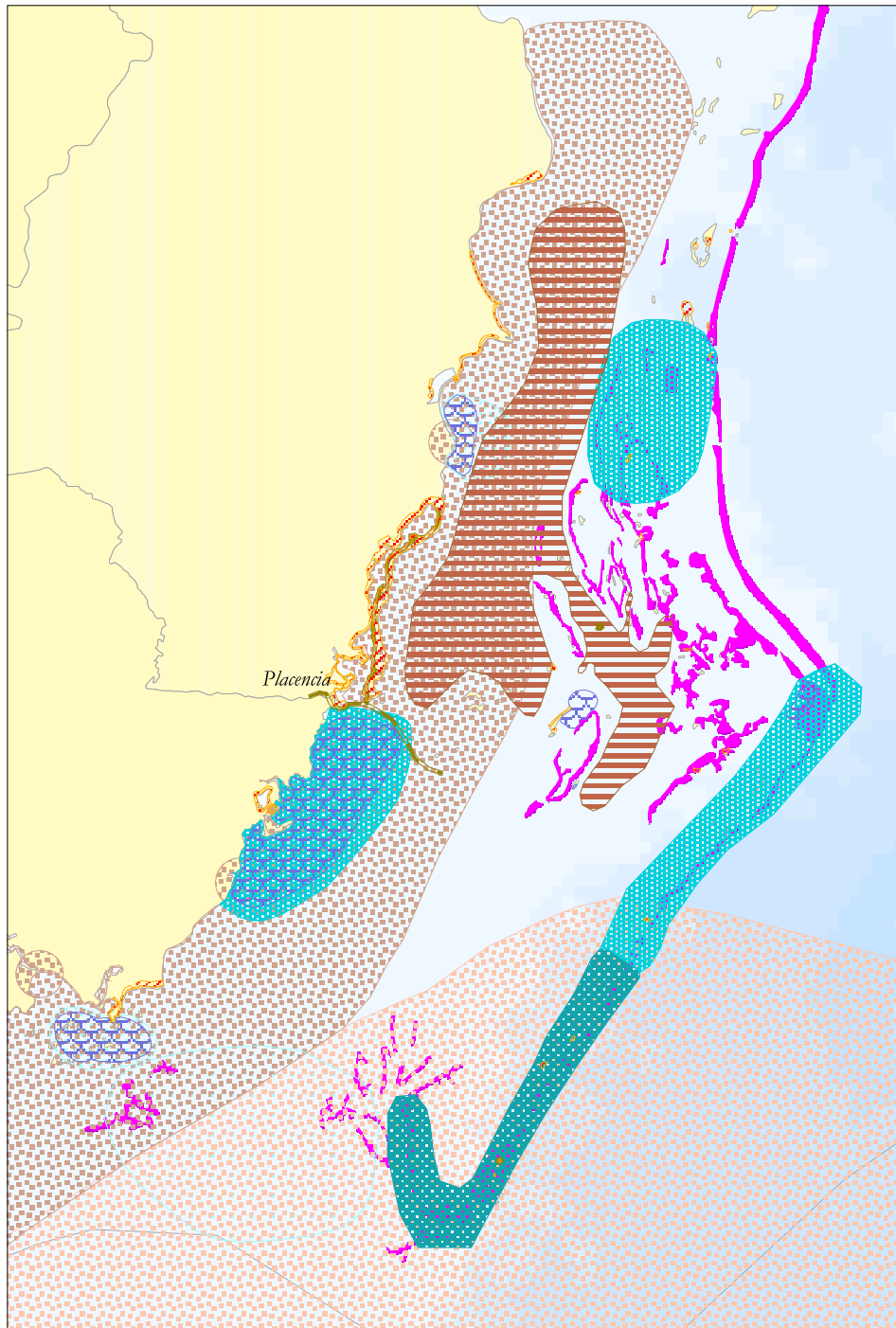


Belize Barrier Reef (Southern) - Key Threats from Expert Mapping

Local stakeholders and scientists at a threat analysis and mapping workshop for the Belize Barrier Reef identified runoff from agriculture, illegal fishing, coastal development, and shrimp trawling as key threats to the Southern section of the Barrier Reef. Runoff from agriculture sends nutrients and pollutants into nearshore waters and threatens reefs, particularly in the far south of the Belize Barrier Reef. Illegal fishing, primarily by Hondurans and Guatemalans, often conducted at night, threatens large areas in the South. Shrimp trawling was identified as a threat in a large area near the central portion of the Belize Barrier Reef, and gill netting as a threat along several portions of the mainland coast. Coastal development and dredging were identified as threats in isolated areas of the mainland coast, particularly near Placencia and on a few cayes.



Data Sources: Threat maps based on results of "Belize Threat Assessment and Mapping" workshop hosted by World Wildlife Fund (WWF) and WCS for the Barrier Reef. Workshop report available on the Belize Coastal Data CD (see below).

Reefs at Risk in Belize

A collaboration between the World Resources Institute, Belize Coastal Zone Management Authority and Institute, and many other partner organisations in Belize. Datasets available on the Belize Coastal Data CD (email datacen@coastalzonebelize.org for more information).