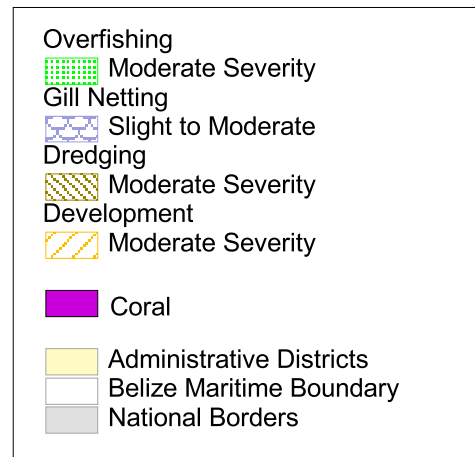
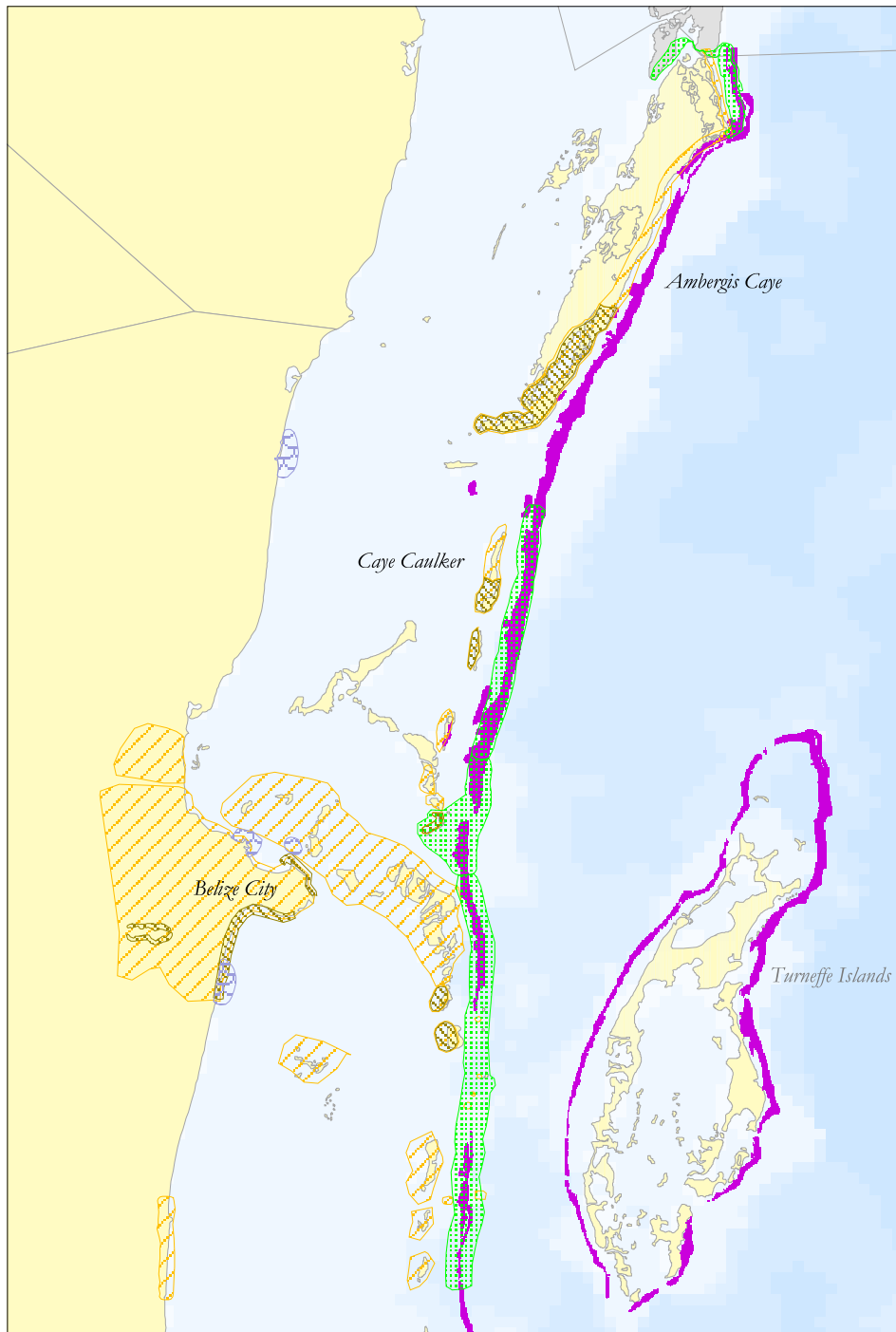


Belize Barrier Reef (Northern) - Key threats from Expert Mapping

Local stakeholders and scientists at a threat analysis and mapping workshop for the Belize Barrier Reef identified coastal development, dredging and overfishing as key threats to the Northern section of the Barrier Reef. Coastal development was identified as a threat along most cayes (from Ambergis Caye to Belize City and further south). Dredging was also identified as a threat in most of these areas. Overfishing was identified as a threat in the far north (along the Mexican border) and in the central portions of the Belize Barrier Reef. Gill netting was identified as a threat at several river mouths along the mainland.



Data Sources: Threat maps based on results of "Belize Threat Assessment and Mapping" workshop hosted by World Wildlife Fund and Wildlife Conservation Society for the Barrier Reef. Workshop report available on the Belize Coastal Data CD (see below).

Reefs at Risk in Belize

A collaboration between the World Resources Institute, Belize Coastal Zone Management Authority and Institute, and many other partner organisations in Belize. Datasets available on the Belize Coastal Data CD (email datacen@coastalzonebelize.org for more information).